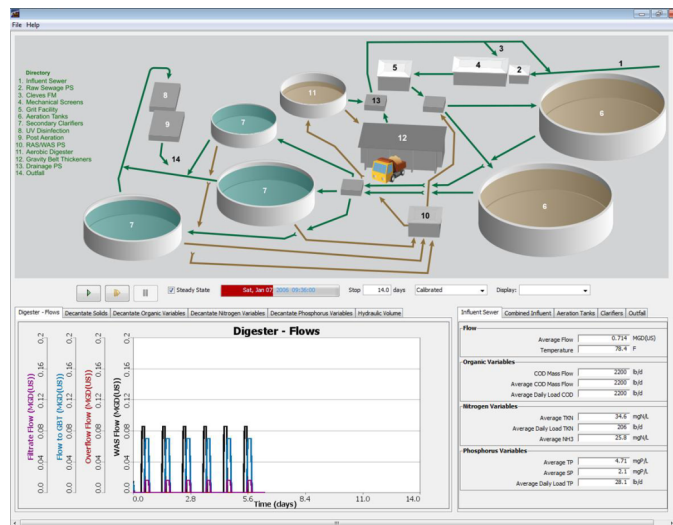


## Customized Operator Interfaces for Advanced Training and Plant Analysis

*SimuWorks™* is an industry first - a flight-simulator for water and wastewater treatment plants. Leveraging the proven technology of Hydromantis' *GPS-X™*, the industry's most advanced mathematical modelling and simulation software, *SimuWorks™* takes training and plant analysis opportunities to new heights.

*SimuWorks™* represents an evolution in the use of water and wastewater treatment simulation and modelling technology, extending its use beyond the engineering offices. Utilizing customized operator interfaces, *SimuWorks™* presents views and functionality familiar to operators and administrators alike in a platform that accurately simulates the behavior of a specific plant.



These site specific calibrated models, deployed within customized operator interfaces or dashboards, offer:



- advanced operator training and education
- rapid identification and validation of plant optimization and cost-saving strategies
- sophisticated project and operational risk analysis
- key decision-making support for all levels of management



*SimuWorks™* can be deployed as a complete life-size replica of a specific control room, set-up as a mobile control room for regional training with a library of various plant models, used in more traditional multi-station classroom environments or loaded on individual workstations.

---

### Advanced Operator Training and Development

*SimuWorks™* is a state of the art operator training and development platform that allows instructors to train and evaluate new or existing operators in a controlled and safe environment. The training can offer actual SCADA or customized look interfaces tied to the plant models that closely simulate actual plant behaviour. The training offers exposure to many simple or highly complex scenarios within a realistic environment but with no risk to actual plant performance.

Because the trainees can operate the virtual plant in the same manner they would the real plant (e.g. have access to the same operational control parameters, such as DO set-points and sludge wastage), learning is systematic and adopted well. Site-specific models have been used to train operators on such topics as step-feeding during storm events, troubleshooting nitrification/denitrification and what to do during periods of poor settling.



### Plant and Process Optimization

*SimuWorks™* offers a platform for fast and efficient testing and validation of any number of plant optimization or upgrade possibilities without putting the plant at risk. Operators, engineers, management or any other user type can evaluate new technologies, test new operational control strategies, run "what-if" scenarios (capacity, flow rates, chemical dosing, energy usage, etc.) and more. The implementation of *SimuWorks™* can promote a better understanding of plant control at all levels within an organization.



### Project Management and Risk Analysis

*SimuWorks™* becomes an important part of the planning process for projects. By simulating various scenarios around downtime for plant maintenance or modifications, potential risks can be identified and optimum project planning achieved.



---

Our other products:

**TOXCHEM™**

**CAPDEL  
Works™**

**GPS-X™**

**WATPRO™**

Hydromantis offers expert modelling services for treatment plant design and optimization and is the developer and owner of the industry's most popular modelling and simulation software including: GPS-X, SimuWorks, Toxchem, CapdelWorks and WatPro.

[www.hydromantis.com](http://www.hydromantis.com)